

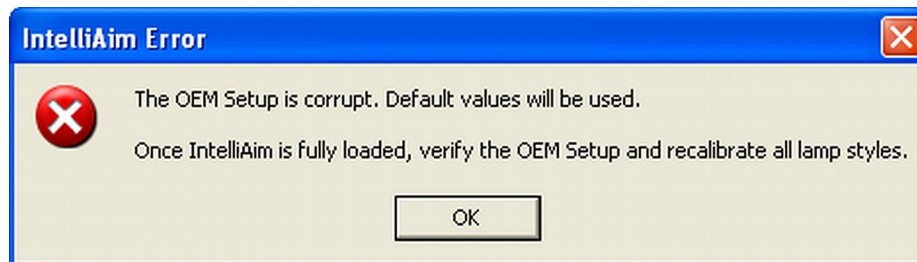
IntelliAim Quick Start Guide

Use this document as a way to quickly become familiar with IntelliAim. The best way to use the Quick Start Guide is to follow the steps as you are reading the guide. After completing the Quick Start Guide, you will be able to create a lamp style and perform an aim. Please read the User's Manual for further details.

Throughout this document you will be directed to click on specific sequences of items. These sequences are represented as two or more items separated by "|". For example, an instruction to click the Setup menu and then the Lamps item on that menu would be shown as Lamps | Setup.

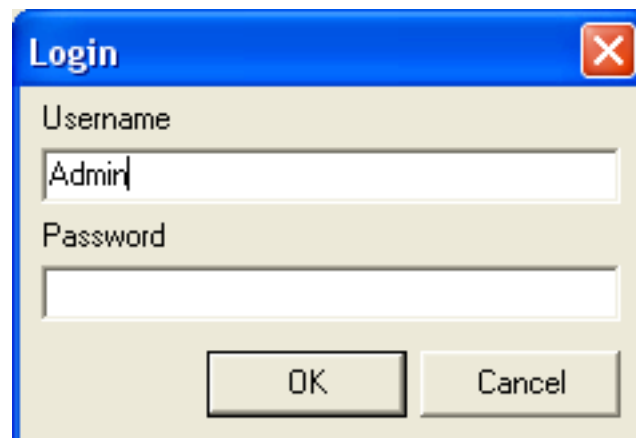
Using IntelliAim

When the IntelliAim demo executes for the first time, it will show an error.

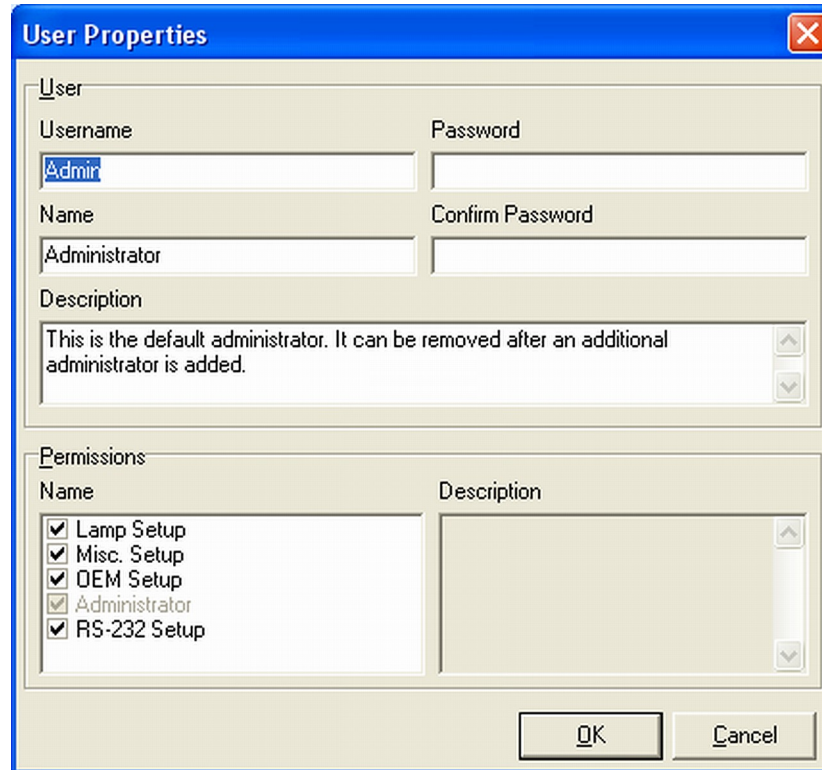


This is normal. You can click OK and ignore it. This error is a result of not having an actual aimer attached to your PC. You will not receive the error on subsequent executions.

Once IntelliAim starts, you will need to login to gain permission to change the IntelliAim setup. Do this by clicking Security | Login. Use username Admin and leave the password blank.



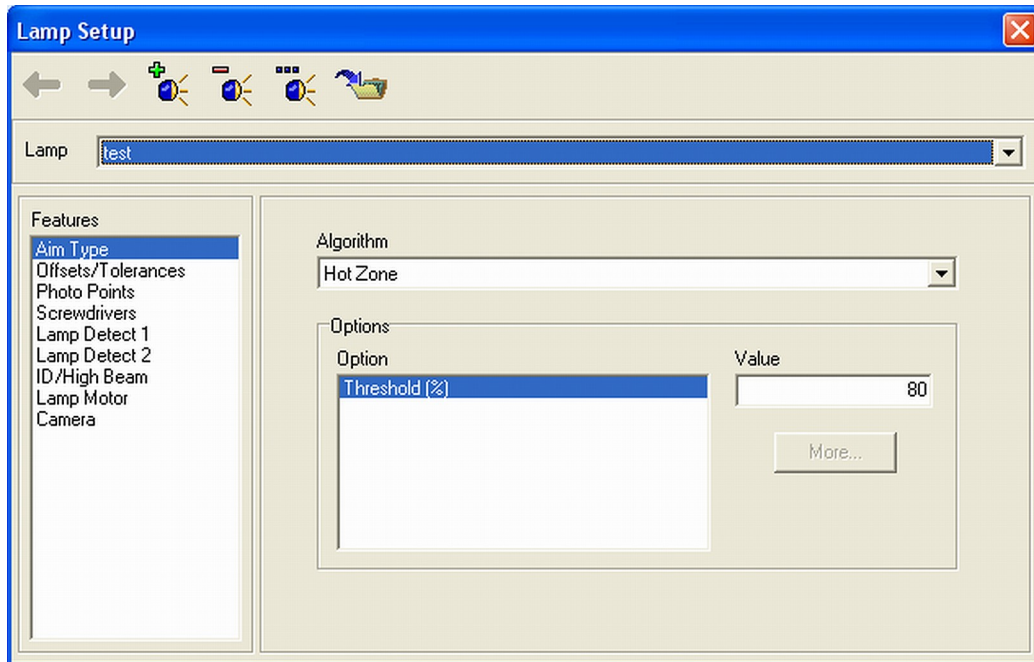
After logging in, increase the Admin user permissions by clicking Security | Users | Properties and placing a check in all the boxes in the permissions section.



This gives the Admin user full permissions. Note that there is a command line argument to disable the security feature for situations in which security is not an issue. Click OK and then click Close.

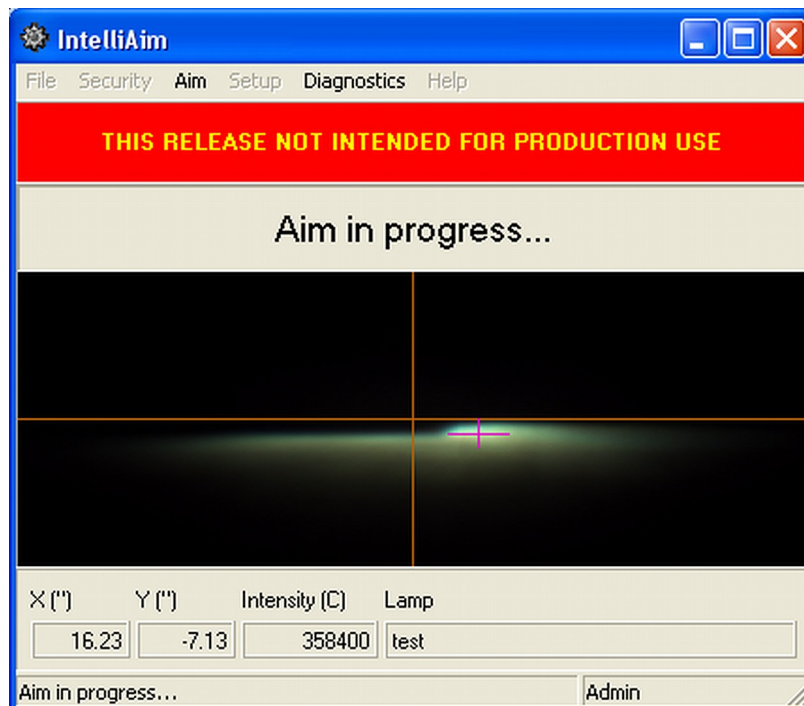
To make the user changes effective, logout and login in again. Do this by clicking Security | Logout and then Security | Login. Use the Admin username and leave the password blank.

Now you must create a lamp style. Lamp styles allow you to adjust how lamps are aligned. To create a lamp style, click Setup | Lamps and then click the Add Lamp button (green plus). Type "test" (no quotes) as the name of the lamp and click OK.

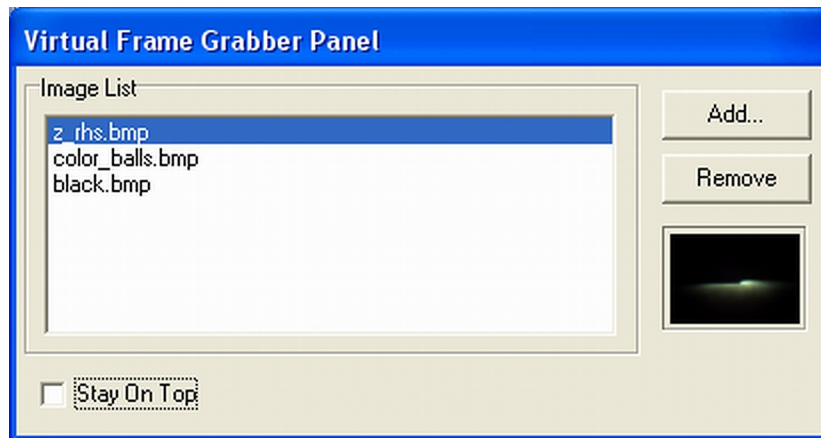


Click Save and Close (the folder with the arrow).

You are now ready to aim a lamp. Do this by clicking Aim | Manual. At this point, the aimer is constantly processing the image and showing the current aim statistics below the image.

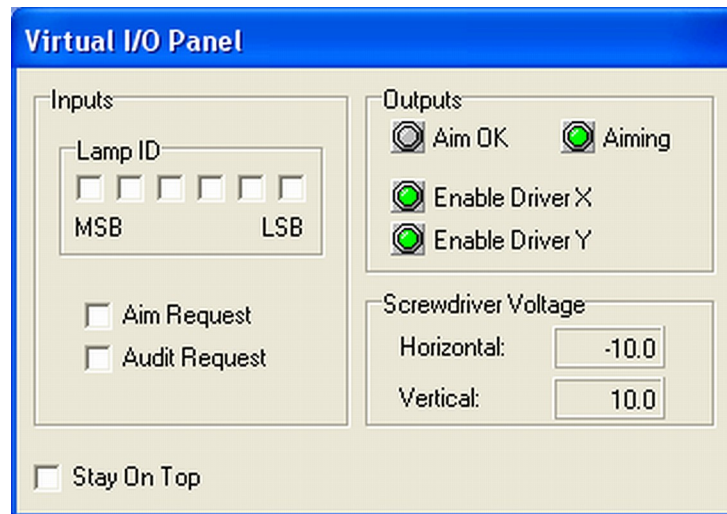


The Virtual Frame Grabber Panel can be thought of as a camera.



The image selected in this window will be displayed as the lamp image in the main window. Select a different image while aim is in progress and watch the image in the main window update to the selected image. Note that the aim changes when the image changes. Under normal operation, the Status Message will show Aim OK and aiming will stop when the lamp is properly aligned. A proper alignment is achieved when the crosshairs are centered at HV. If electronic screwdrivers were attached and configured, IntelliAim would control them to automatically adjust the lamp into proper alignment. To stop aiming, click Aim | Stop.

The Virtual I/O Panel shows the state of the digital inputs, digital outputs and screwdriver control voltage.



In this window, checkboxes and LED's signify the digital I/O. Checkboxes show the inputs and LED's show the outputs. Using an external controller such as a PLC to interface with the digital I/O allows the aimer to be remotely controlled as part of a complete aim station.

In addition to the digital I/O, the Virtual I/O Panel also shows the voltage being delivered to the electronic screwdrivers. Positive 10V is full speed in one direction and negative 10V is full speed in the opposite direction.